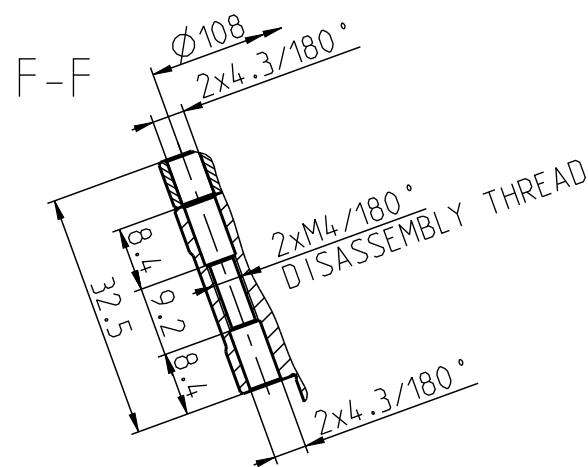
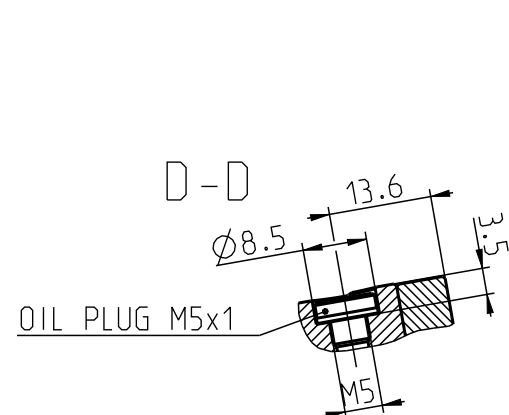
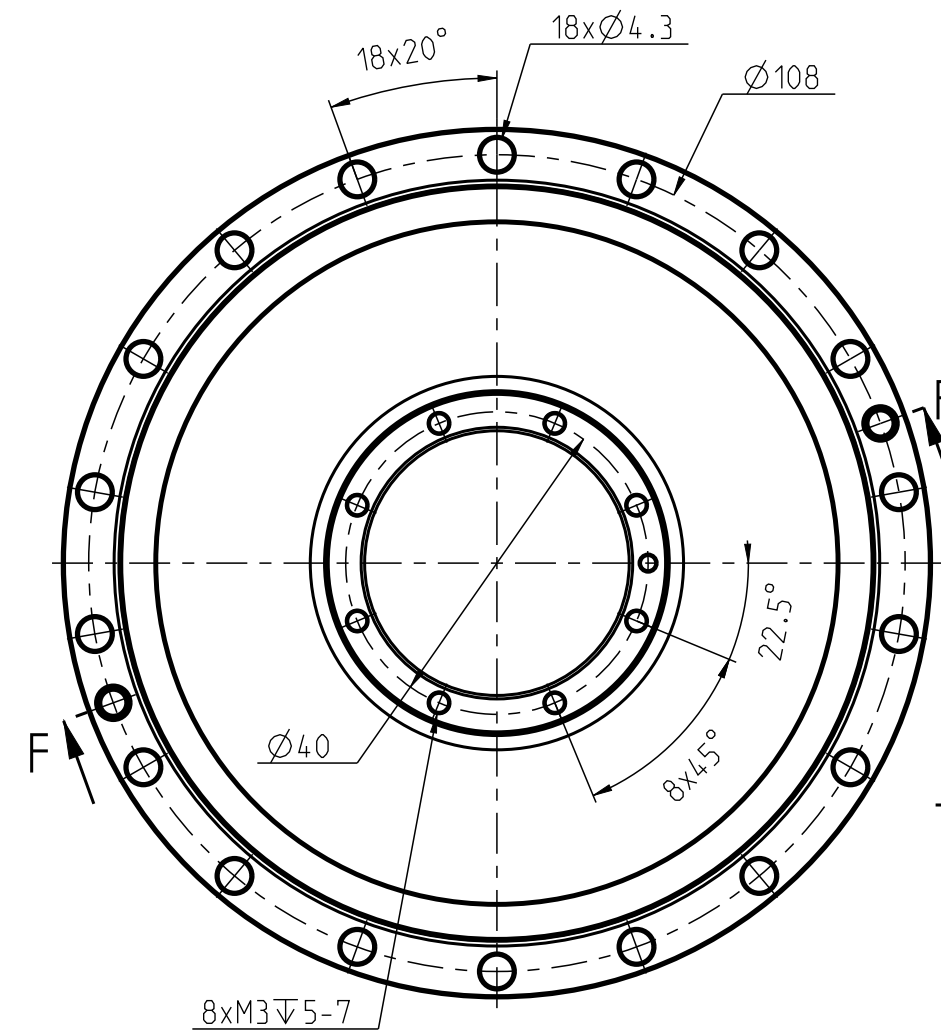
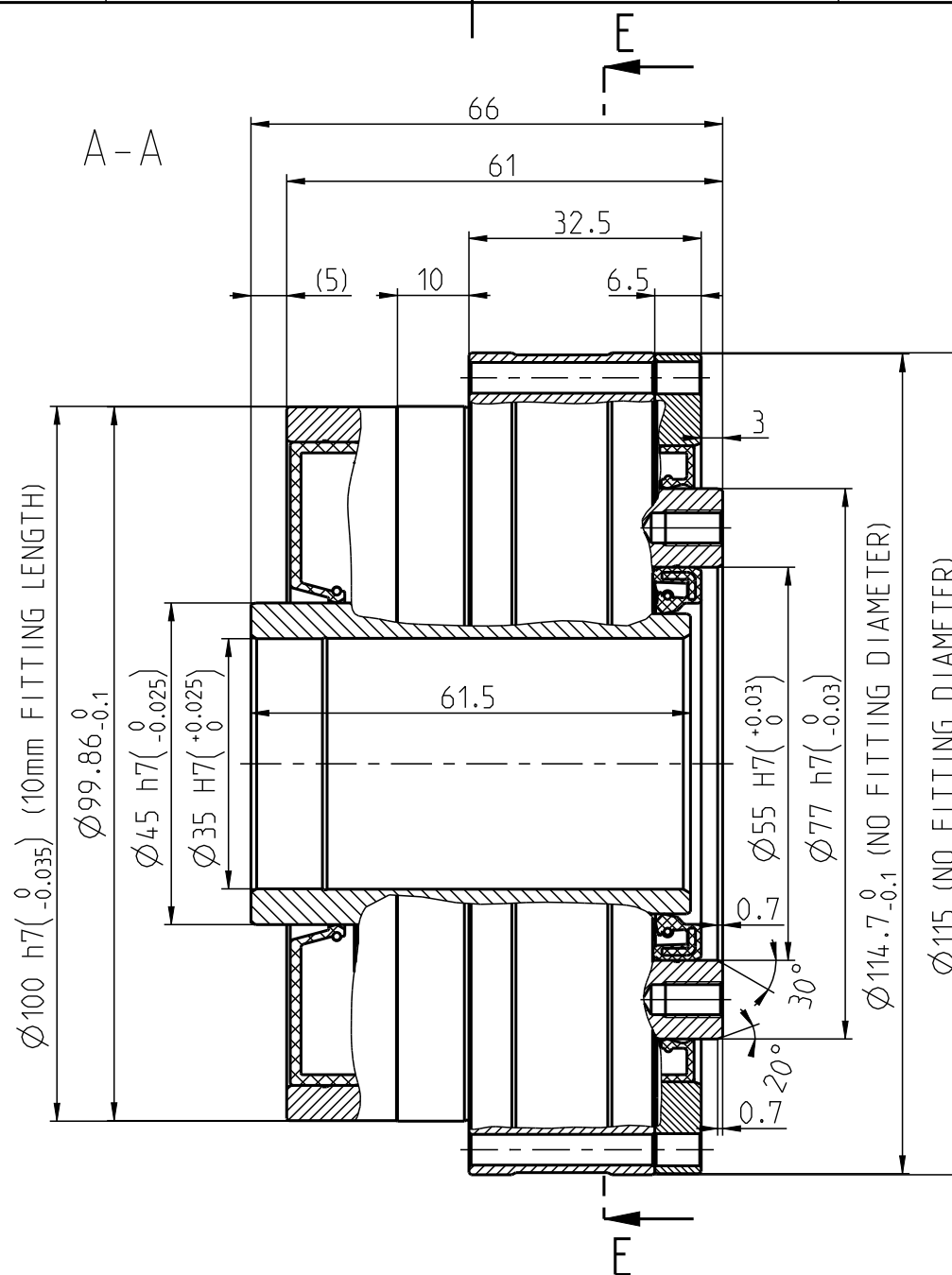
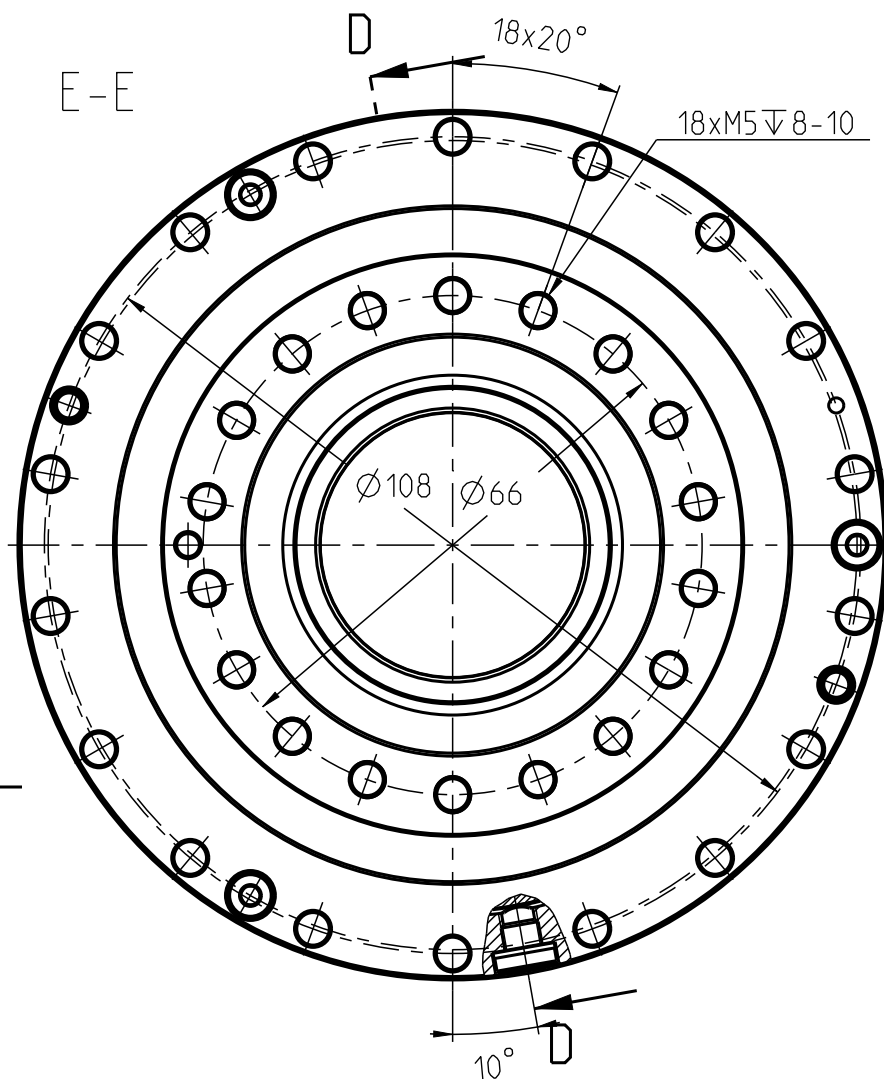




For this drawing we reserve all rights. Without our permission it may neither be copied nor made accessible to third persons.
All patent trademarks and other right in this drawing and are expressly reserved by SPINEA Ltd.



Note:
- MAIN RING MUST BE IN OPERATION FIXED
18pcs SCREW M3 St 12.9
TORQUE 5Nm

VER/INDEX	ZMENA		DATUM	PODPIS	 SPINEA EXCELLENCE IN MOTION			
MATERIAL	-			T.O.				
ROZM.-POLOT.	- -			POC.KS	-			
POM. ZAR.			TECHNOL.PREJ.					
KONST.NAVRH	Ceslar	01-Apr-19	TECHNOL.ODSUH.					
KONST.ODSUHL	Klucar		SCHVALIL	B. JANEK				
VYR. PREJ.	PLATI OD							
TS 115-i-GHX-H35-0793				115GHx				
NAZOV				TYP				

		NEKOTOVANE HRANY = 0.3x45°	
NETOLEROVANE ROZMERY - STN ISO 2768-mK			
HMOTNOST [kg]	2.894	MIERKA	1:1
		POZICIA	-
MENO MODELU/ VERS.	115_000G_0793_P/		
MENO VYKRESU/VERS.	115_000G_0793_P/		
LIST/LISTOV	1/1	ARTIKEL	309101-#00#
0-793 P00		#00-3	
		-/-	
CISLO VYKRESU		VER./INDEX	