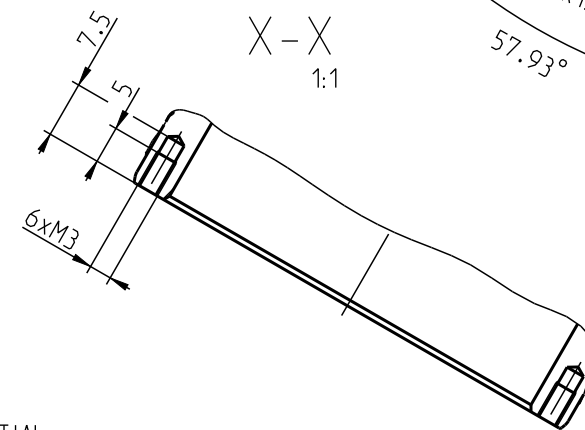
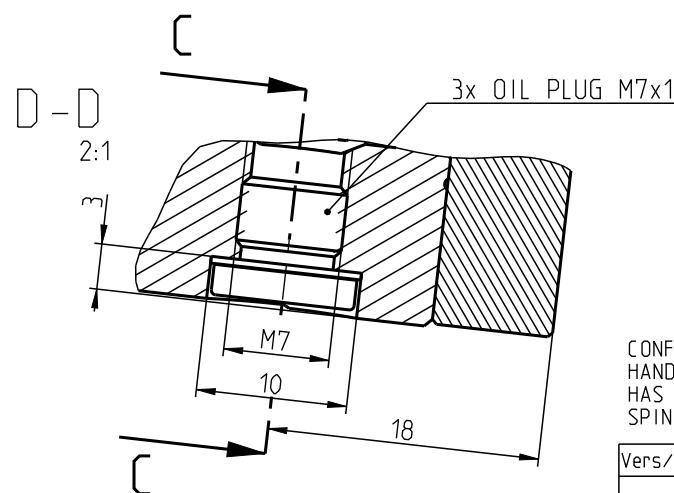
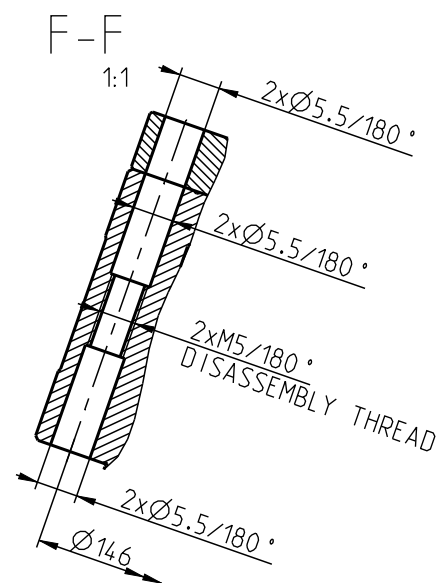
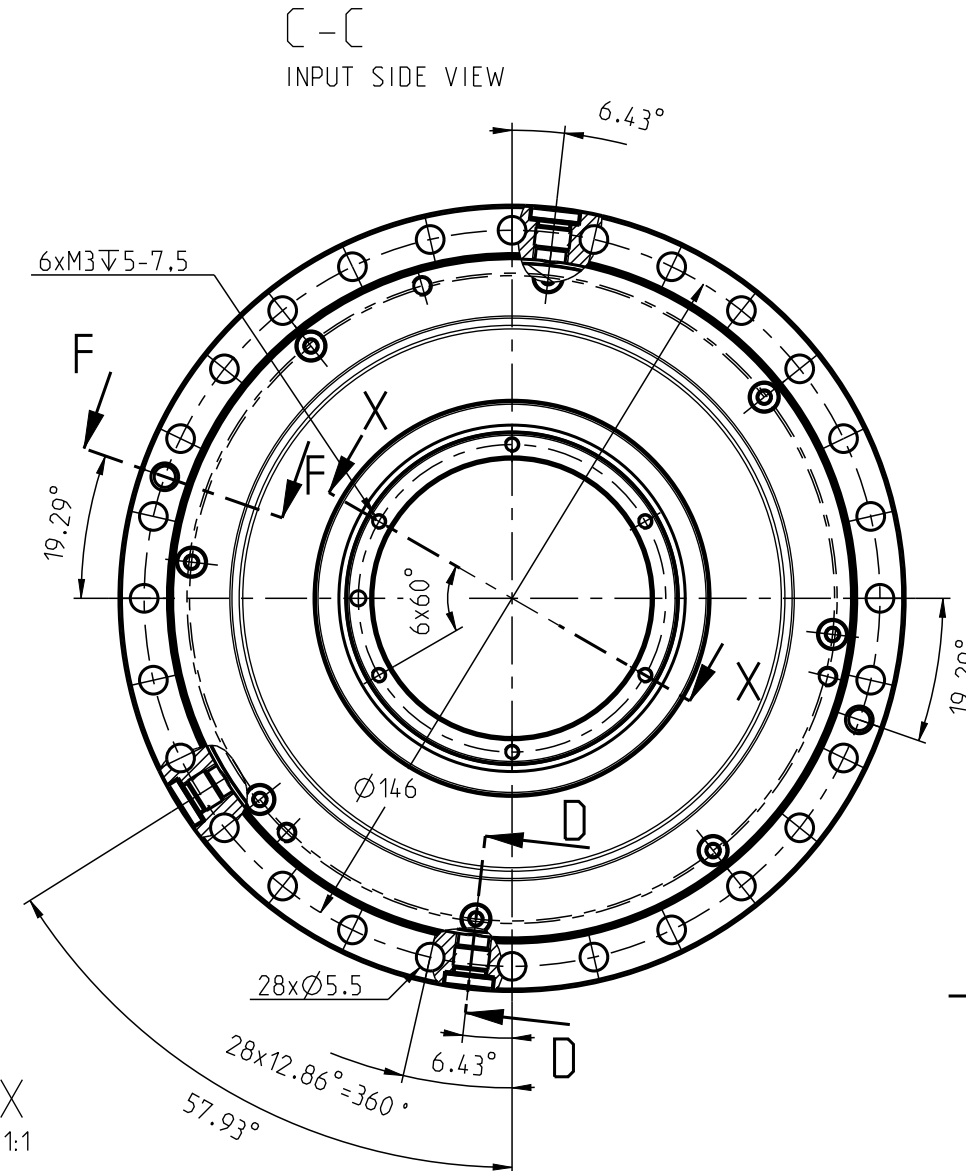
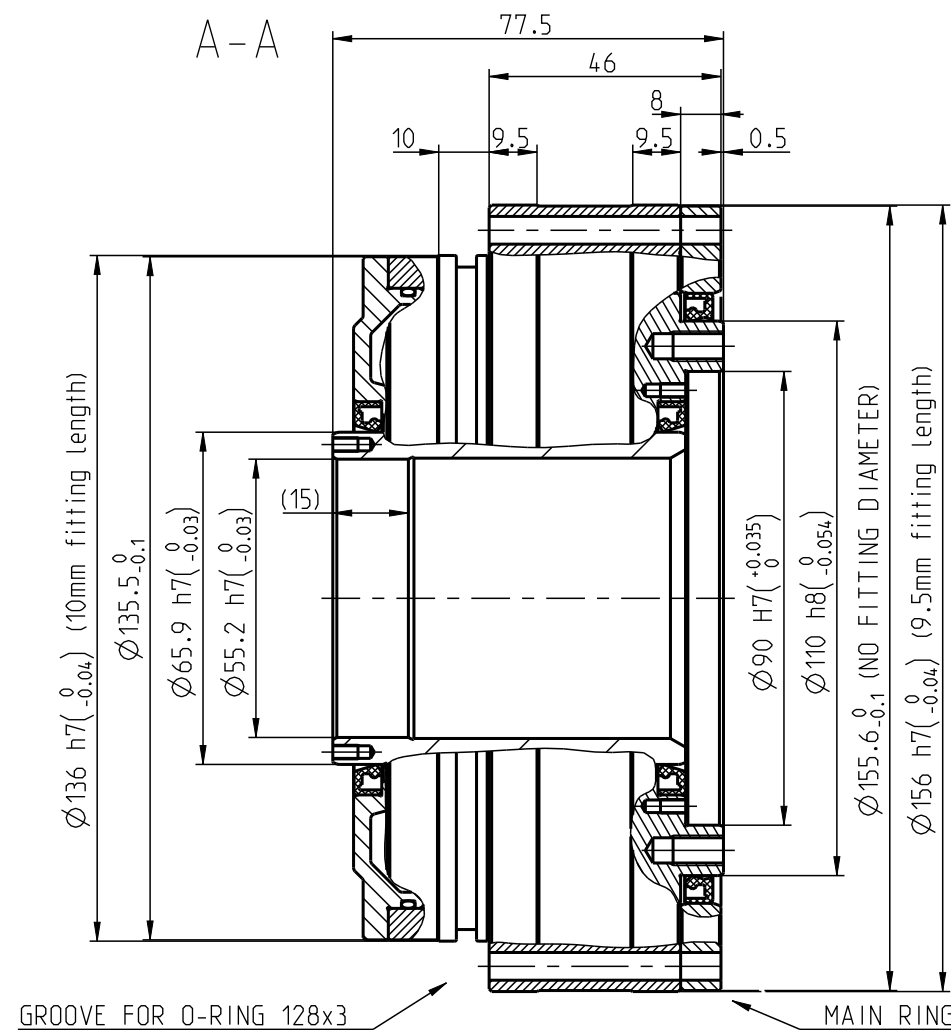
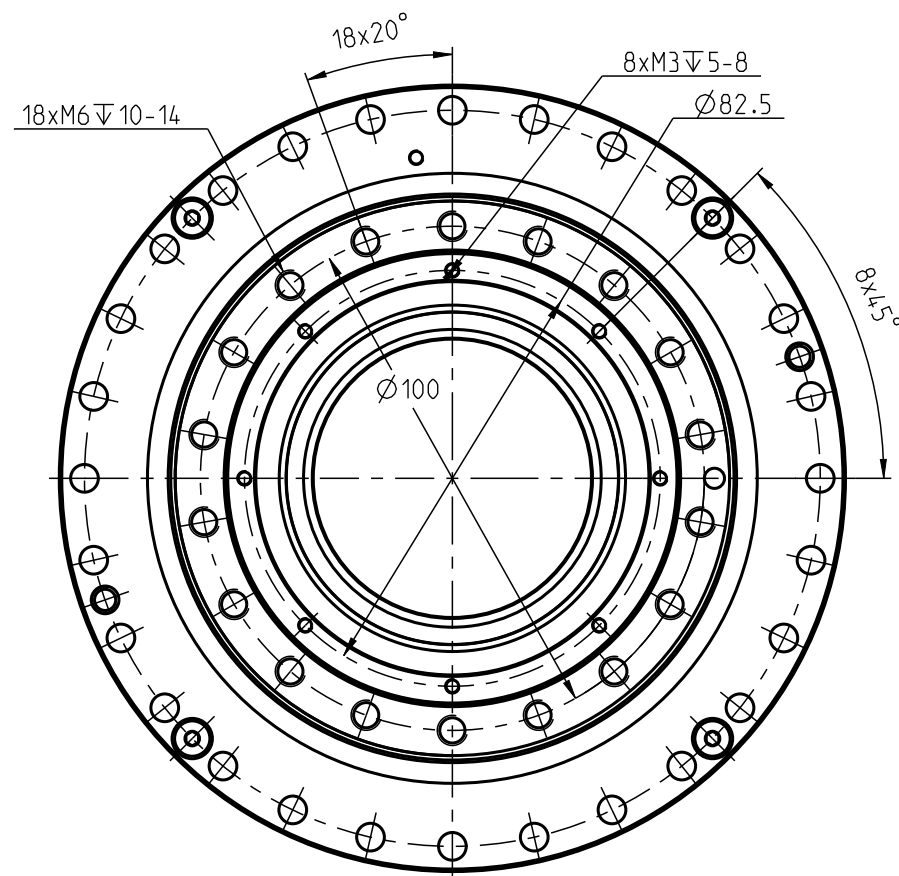



For this drawing we reserve all rights. Without our permission it may neither be copied nor made accessible to third persons.  
All patent trademark and other right in this drawing and are expressly reserved by SPINEA Ltd.



CONFIDENTIAL  
HANDLING, STORAGE AND / OR OPERATION OF ANY SPINEA GEAR REDUCER OR ACTUATOR  
HAS TO COMPLY WITH THE CONDITIONS AND REQUIREMENTS SET FORTH IN  
SPINEA PRODUCT CATALOGUE AND THE RESPECTIVE USER MANUAL (WARRANTY CONDITION).

Vers/Revs	Change	Date	Signature	 <b>SPINEA</b> EXCELLENCE IN MOTION			
				Undimensioned Edges = 0.3x45° Untoleranced Dimensions - STN ISO 2768-mK			
Material	-			Weight [kg]	6.846	Scale	1:1.5
Semi-Product	- -			Pieces	-	Position	-
Attachment				Model Name/ Vers.	155_000G_H55_0739_P/ -.1		
Design Prepared Klucar	10-Nov-20	Techn.Prepared		Drawing Name/Vers.	155_000G_H55_0739_P/		
Design Checked Menyko		Confirmed		Sheet/Sheets	1/1	ARTIKEL	-
Manuf.Checked		Valid From		0-739 P00 #00-3		- /b	
TS 155-i-G-H55-0739			TS 155G	Drawing-No		Vers/Revs	
Description			Type				

Note:  
- Main ring must be fixed in operation with  
18pcs of SCREW M5 St 12.9, TIGHTENING TORQUE 8Nm